



London Regional Genomics Centre

Robarts Research Institute

Survey Monkey Summary

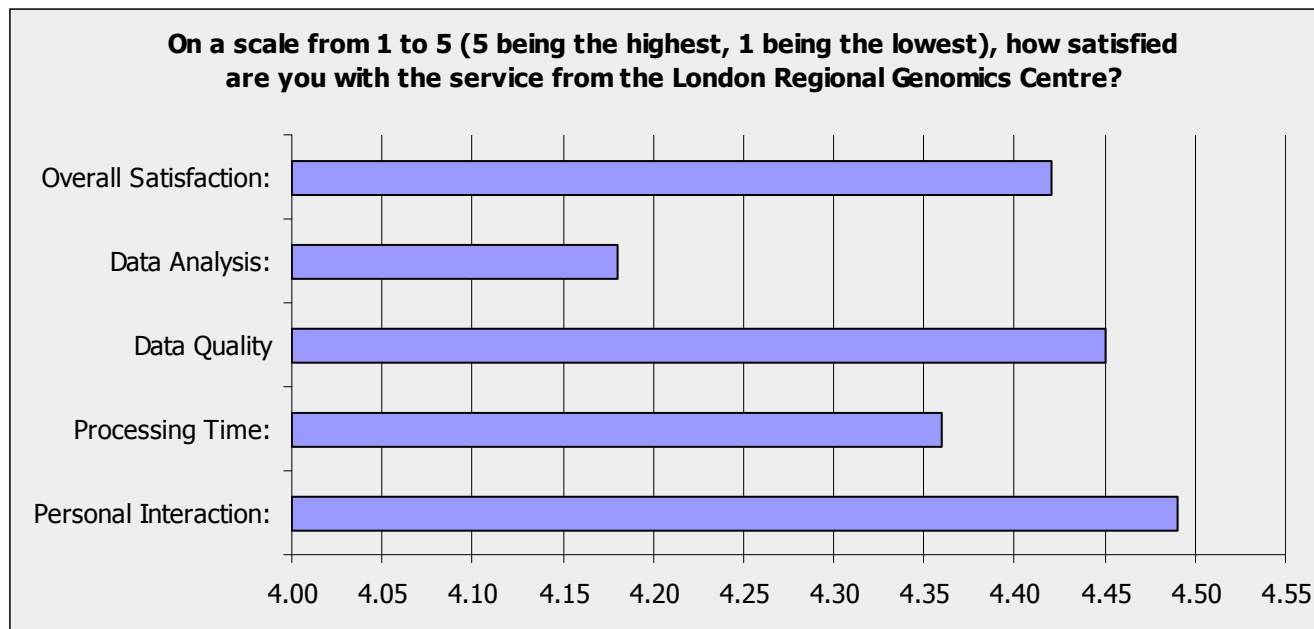
Spring 2010

Survey Monkey Statistics

- **Survey: 8 questions**
- **Recipients: 172**
- **Total Started Survey: 60 (34.9%)**
- **Total Completed Survey: 54 (31.4%)**

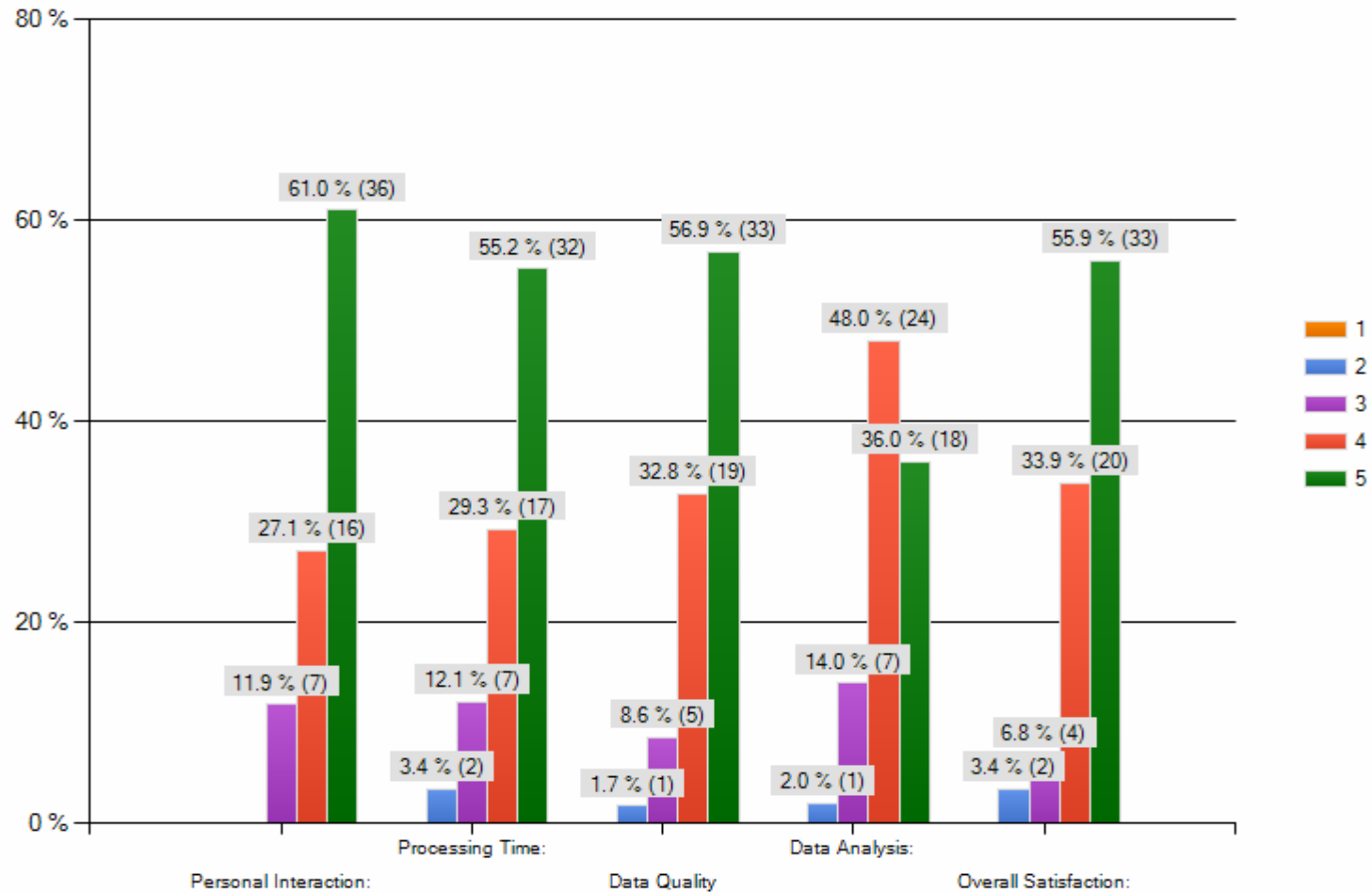
- **Last email survey 2004: 12/33 (36.45%)**

Satisfaction



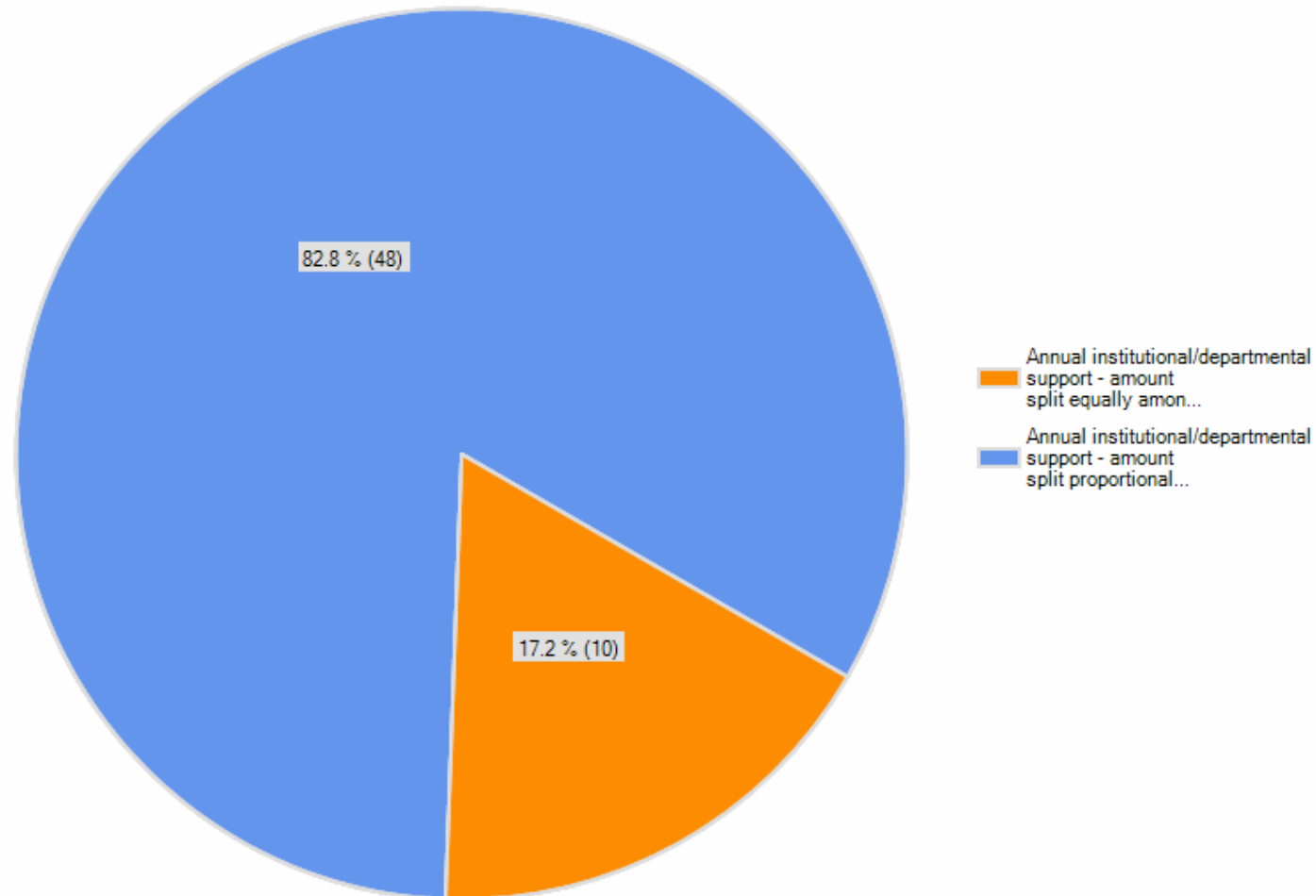
Satisfaction

On a scale from 1 to 5 (5 being the highest, 1 being the lowest), how satisfied are you with the service from the London Regional Genomics Centre?



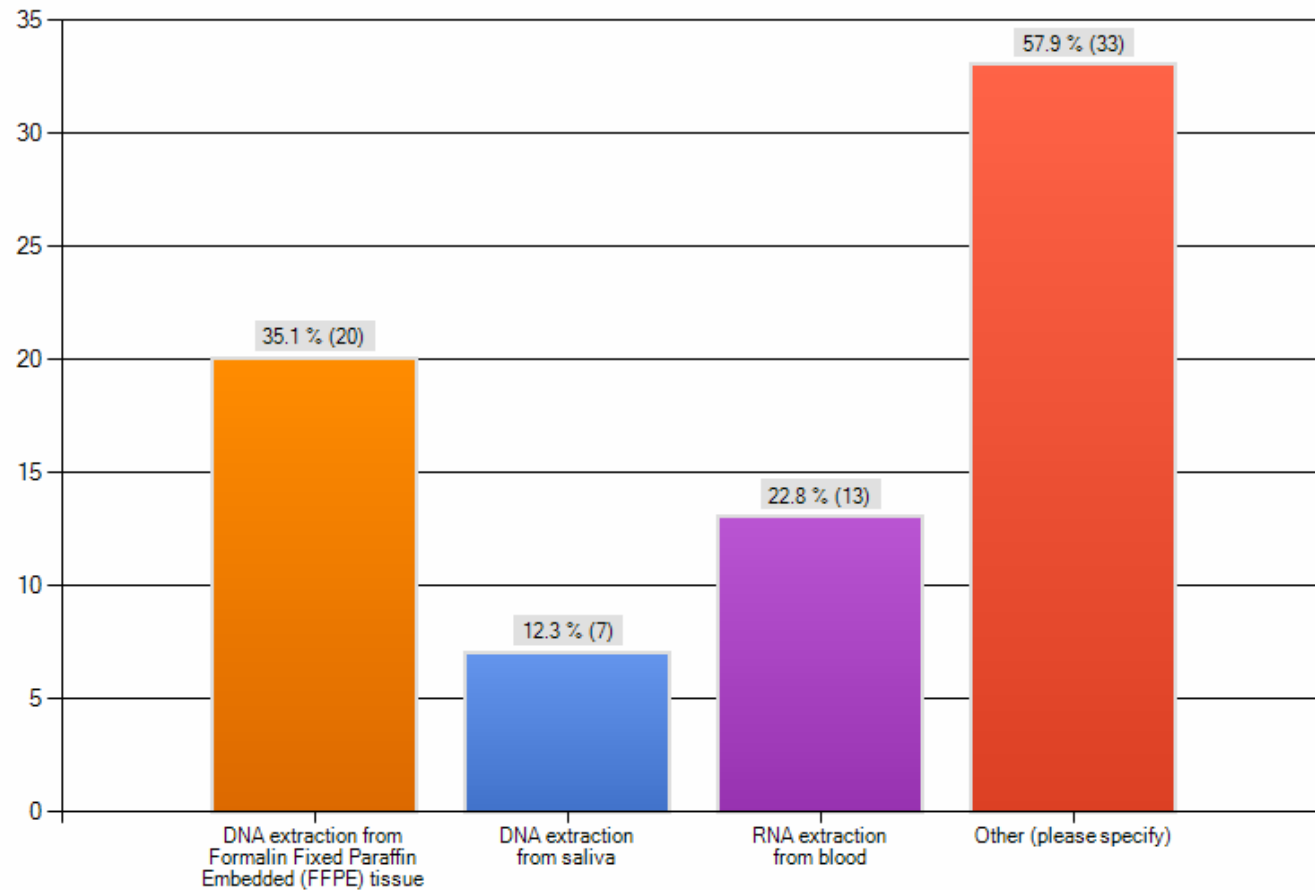
Financial Support Model

Which financial model would you support:



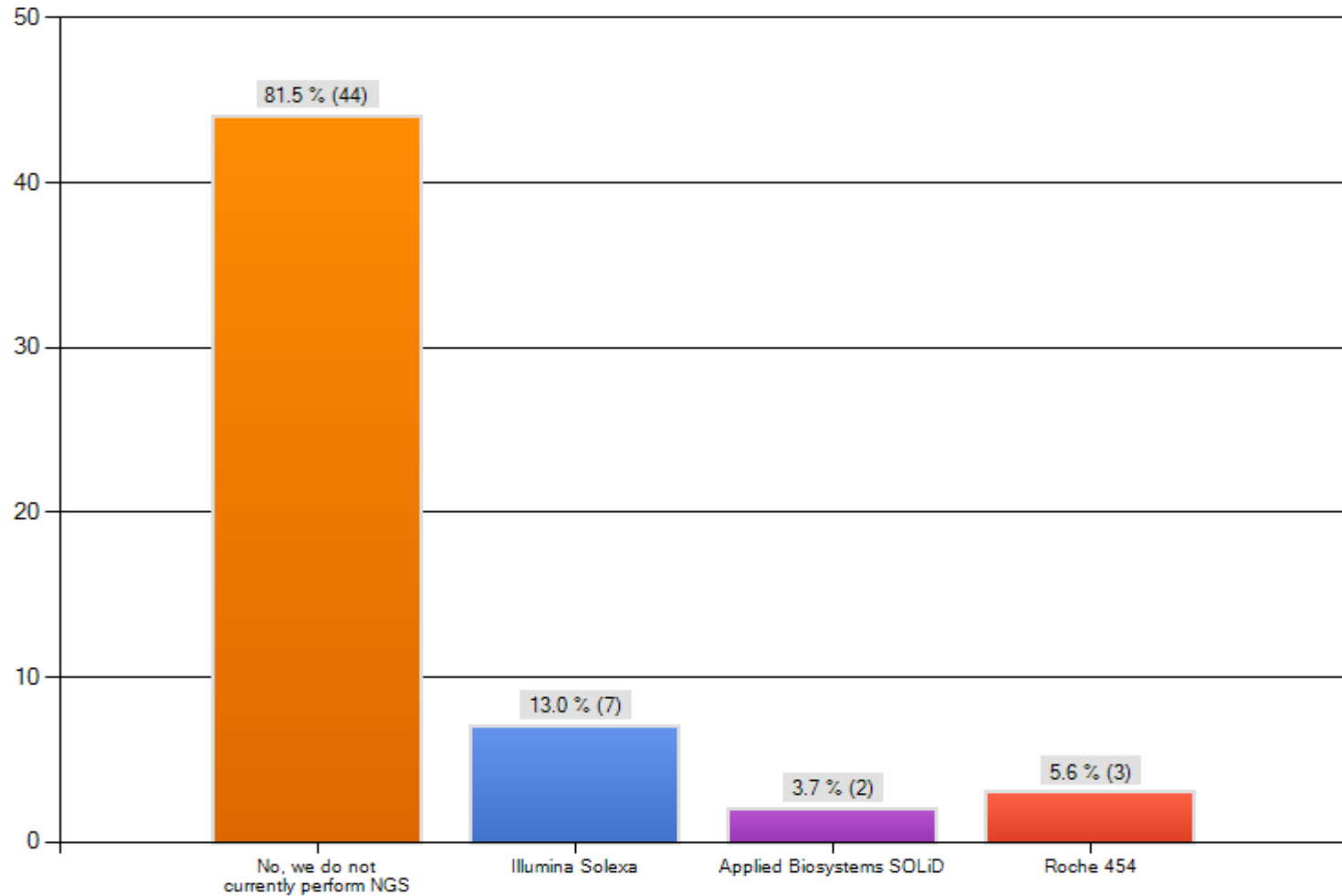
Potential New Services

Should the LRGC expand the types of services offered? Please indicate the services you would use.



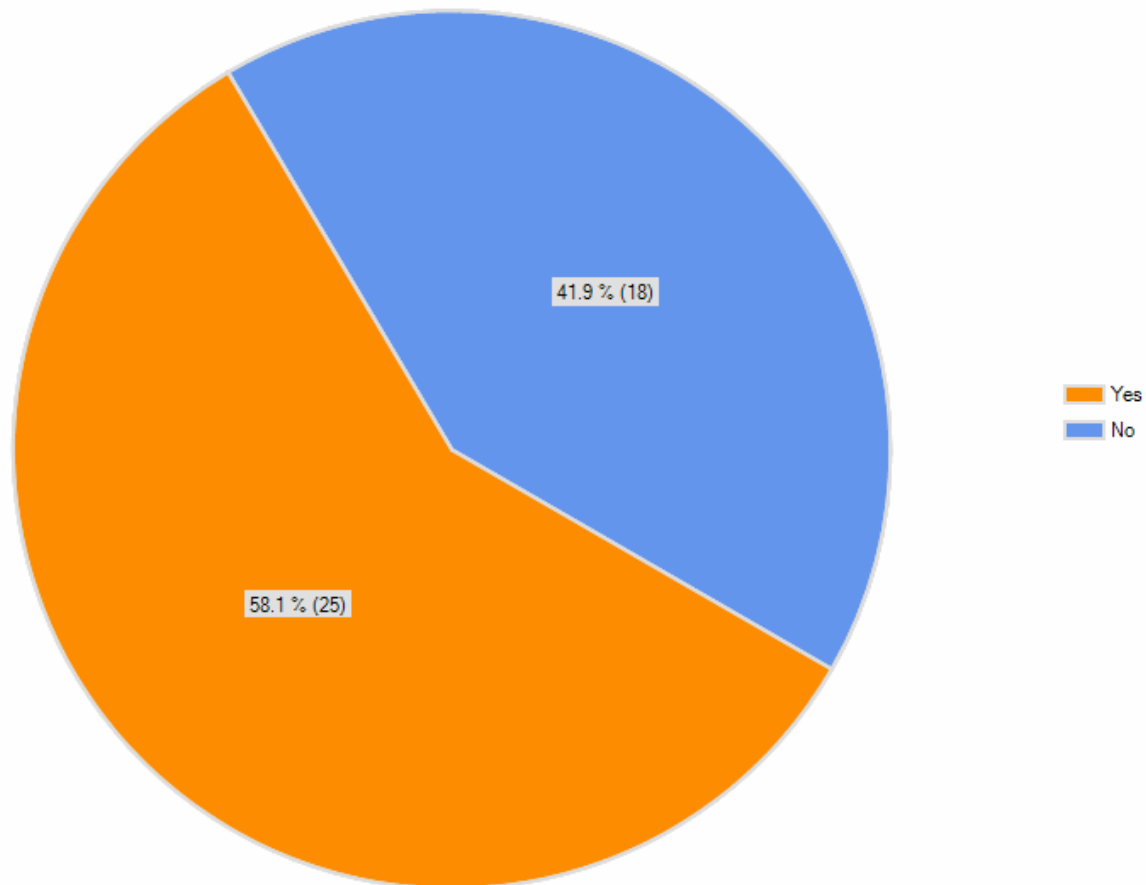
Next-Generation Sequencing

Do you currently use any of the following NGS platforms?



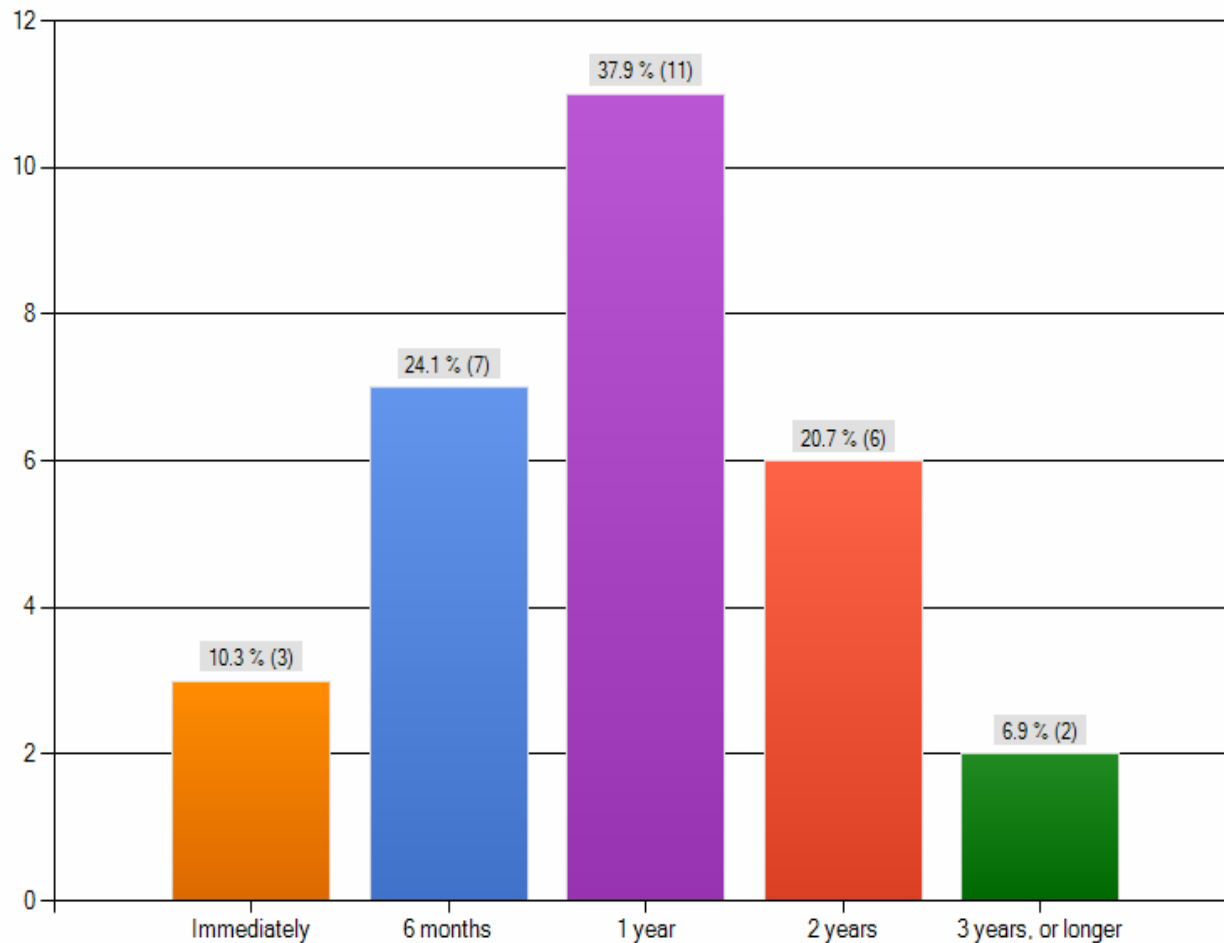
Next-Generation Sequencing

If you are not using NGS, do you anticipate the use of NGS in the future?



Next-Generation Sequencing

If you plan to use NGS, when do you anticipate you would require the use of this technology?



No. Samples/year	Response
1 to 20	10
21 to 40	
41 to 60	2
61 to 80	
81 to 100	2
>100	2